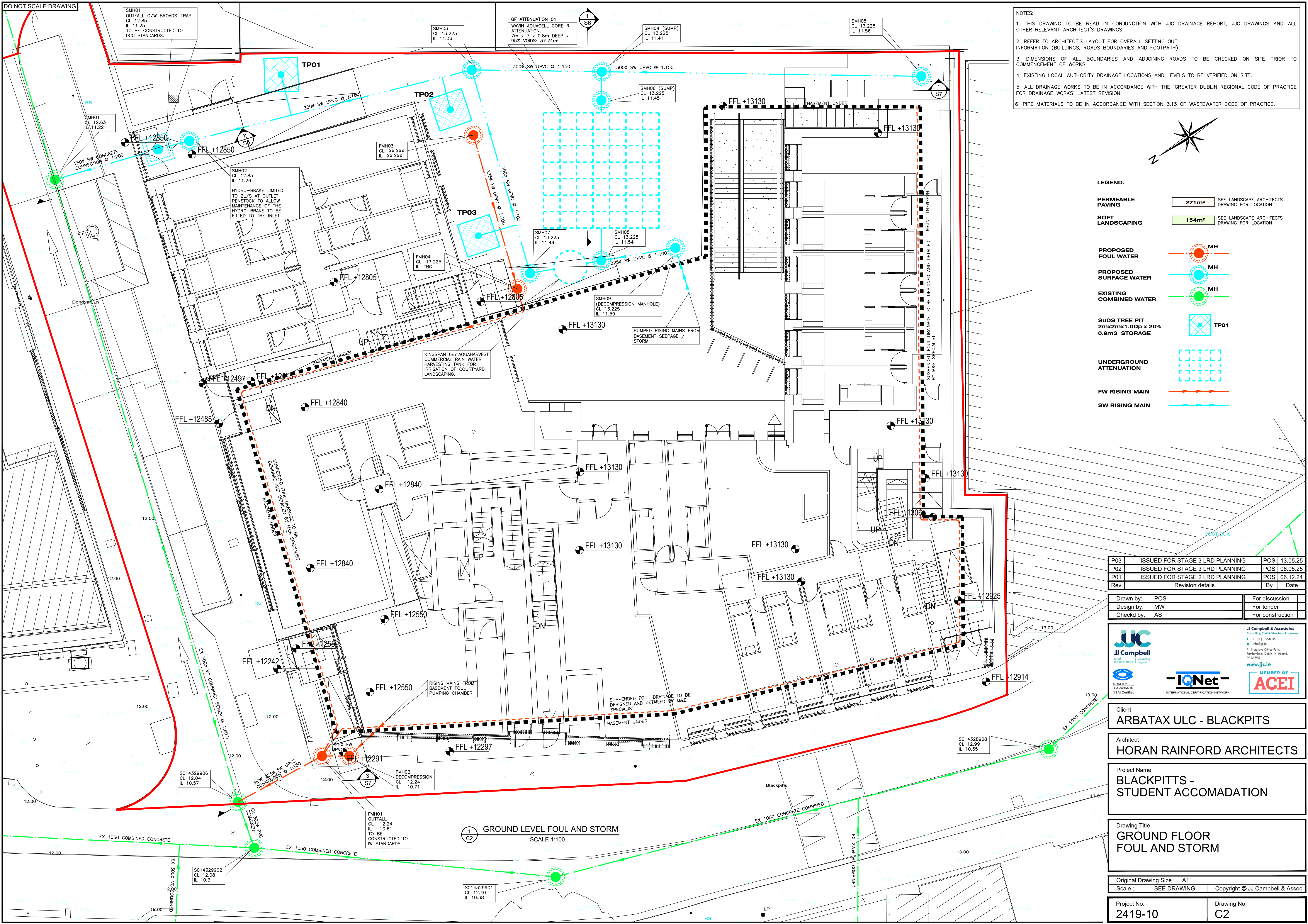


DO NOT SCALE DRAWING



- NOTES:
1. THIS DRAWING TO BE READ IN CONJUNCTION WITH JJC DRAINAGE REPORT, JJC DRAWINGS AND ALL OTHER RELEVANT ARCHITECT'S DRAWINGS.
  2. REFER TO ARCHITECT'S LAYOUT FOR OVERALL SETTING OUT INFORMATION (BUILDINGS, ROADS BOUNDARIES AND FOOTPATH).
  3. DIMENSIONS OF ALL BOUNDARIES AND ADJOINING ROADS TO BE CHECKED ON SITE PRIOR TO COMMENCEMENT OF WORKS.
  4. EXISTING LOCAL AUTHORITY DRAINAGE LOCATIONS AND LEVELS TO BE VERIFIED ON SITE.
  5. ALL DRAINAGE WORKS TO BE IN ACCORDANCE WITH THE 'GREATER DUBLIN REGIONAL CODE OF PRACTICE FOR DRAINAGE WORKS' LATEST REVISION.
  6. PIPE MATERIALS TO BE IN ACCORDANCE WITH SECTION 3.13 OF WASTEWATER CODE OF PRACTICE.

**LEGEND.**

**PERMEABLE PAVING** 271m<sup>2</sup> SEE LANDSCAPE ARCHITECTS DRAWING FOR LOCATION

**SOFT LANDSCAPING** 154m<sup>2</sup> SEE LANDSCAPE ARCHITECTS DRAWING FOR LOCATION

**PROPOSED FOUL WATER** MH

**PROPOSED SURFACE WATER** MH

**EXISTING COMBINED WATER** MH

**SuDS TREE PIT** 2m x 2m x 1.0m x 20% 0.8m<sup>3</sup> STORAGE TP01

**UNDERGROUND ATTENUATION**

**FW RISING MAIN**

**SW RISING MAIN**

P03	ISSUED FOR STAGE 3 LRD PLANNING	POS	13.05.25
P02	ISSUED FOR STAGE 3 LRD PLANNING	POS	06.05.25
P01	ISSUED FOR STAGE 2 LRD PLANNING	POS	06.12.24
Rev	Revision details	By	Date

Drawn by:	POS	For discussion
Design by:	MW	For tender
Check by:	AS	For construction

**JJC**  
JJ Campbell  
and Associates  
Consulting Civil & Structural Engineers

**IQNet**  
INTERNATIONAL CERTIFICATION NETWORK

**ACEI**  
MEMBER OF

Client  
**ARBATAX ULC - BLACKPITTS**

Architect  
**HORAN RAINFORD ARCHITECTS**

Project Name  
**BLACKPITTS - STUDENT ACCOMADATION**

Drawing Title  
**GROUND FLOOR FOUL AND STORM**

Original Drawing Size :	A1
Scale :	SEE DRAWING
Project No.	2419-10
Drawing No.	C2